



33/10 Pyrmont Bridge Road CAMPERDOWN, NSW



2



2



1

## Spacious and bright contemporary apartment in Camperdown

Enjoy lifestyle and convenience with this sleek contemporary two bedroom apartment on the top floor of the "Etage" complex. With a large North facing terrace with leafy views, this brightly lit apartment features a contemporary open kitchen that flows out to the living area and a private dining alcove, ideal for families that enjoy outdoor space and inner city living.

The clever floorplan separates the living and entertainment quarter to give further privacy allowing quiet enjoyment of the oversized bedrooms. The King sized Master bedroom boasts space and practicality featuring a full size ensuite and wall to wall wardrobe.

### Other Features:

- \* An open living/dining area enjoying high ceilings throughout
- \* Large terrace for entertainment
- \* Modern SMEG appliances and gas cooktop
- \* King master bedroom and built in wardrobes



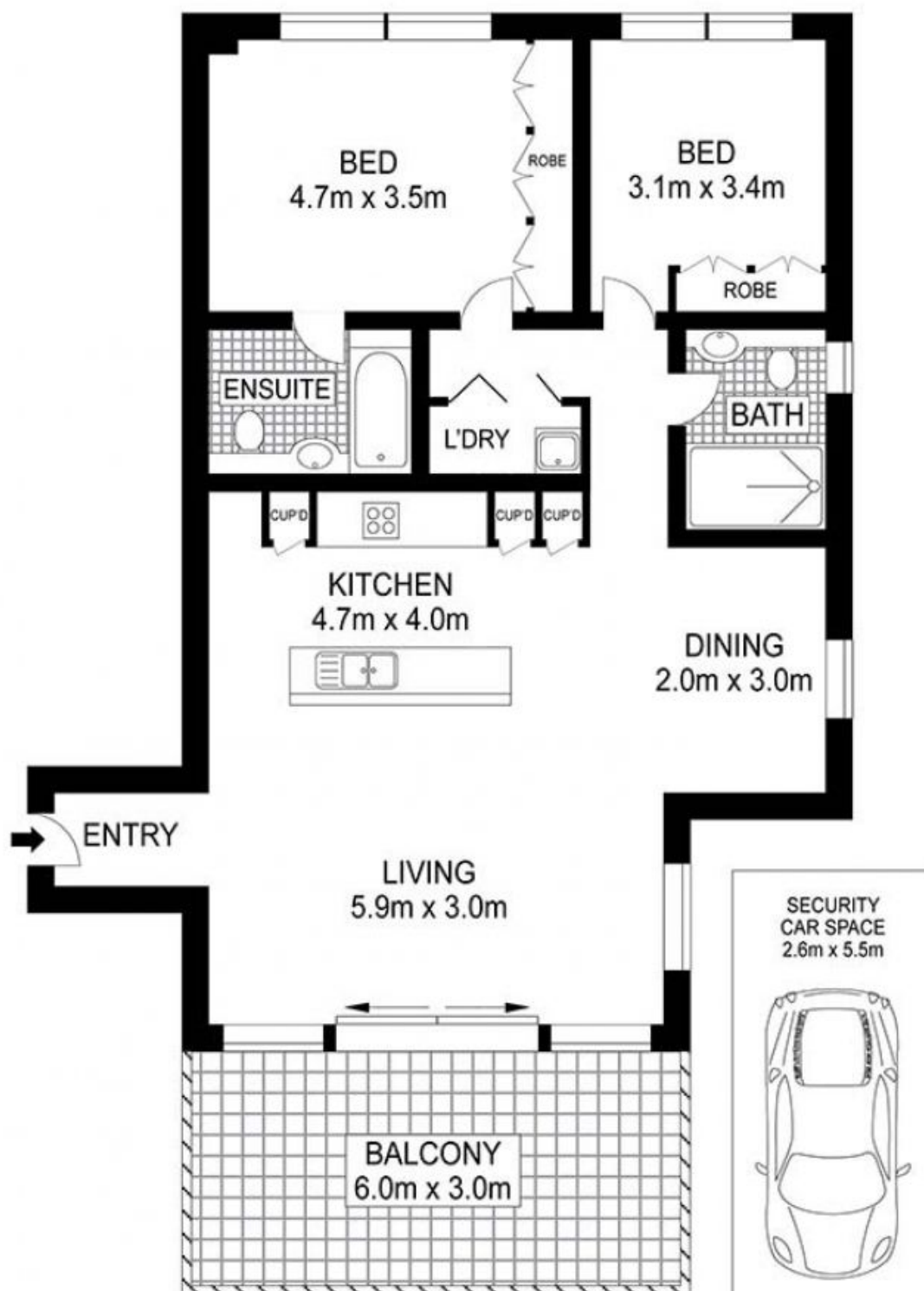
**Darren Ho**

0483897644



**Stephen Liu**

0416098883



Apartment Approx Floor Area 110sqm  
Car space is 14sqm  
Total 124sqm



33/10 Pyrmont Bridge Road, CAMPERDOWN, NSW



RAY REALTORS 永誠地產

Hung  
al