

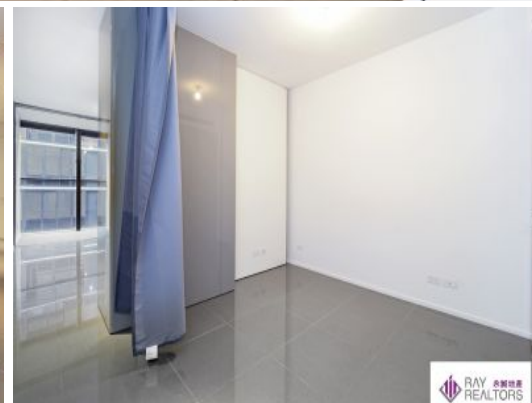


418/18 Park Lane, Chippendale NSW 2008

Register for an Inspection by using your phone camera to scan this QR Code



Those with old phones can download the free app. Quickmark from your app store. Please users must change the following setting in Quickmark: Auto-Open to "Browse URL" and Browser to "Safari".



418/18 Park Lane CHIPPENDALE, NSW



1



1

One of Sydney's most Iconic Complex "Central Park" - Perfect inner city living

Please be COVID safe, do wear a mask when you come to inspection - Thank you!

Located in the Central Park The Mark Tower, this light fill apartment features:

- * Good size bedroom
- * Tiled living room opens up to enclosed balcony
- * Modern kitchen with stainless steel appliances,
- * High end luxury bathroom
- * Basement storage cage
- * Secure building, lift access
- * Fitness centre includes pool, spa and gymnasium
- * 24/7 concierge service

The location of the building is also convenient to all life needs. With boutique shops, galleries, parks, laneways cafes, restaurants and bars at hand's reach; with a short stroll to UTS, Sydney University and Central Station.



Darren Ho

0483897644



Stephen Liu

0416098883