

92/420 Pitt Street SYDNEY, NSW

City CBD Quality Office Suite For Sale

This is an excellent opportunity to occupy a modern commercial suite in the heart of City. "Mosaic" is a 27-storey building comprising residential apartments, commercial offices and retail stores. Located between Goulburn Street and Campbell Street and is handy to Central Station, Town Hall Station, short walk to world square and China Town. The fit-out consists of reception area, three glass partitioning rooms, one conference room and open plan work area.

- ? Approximately 76 sqm
- ? Excellent natural light overlooking Pitt Street
- ? Floor utilities include kitchenette and toilets
- ? On - site gym facilities for occupants

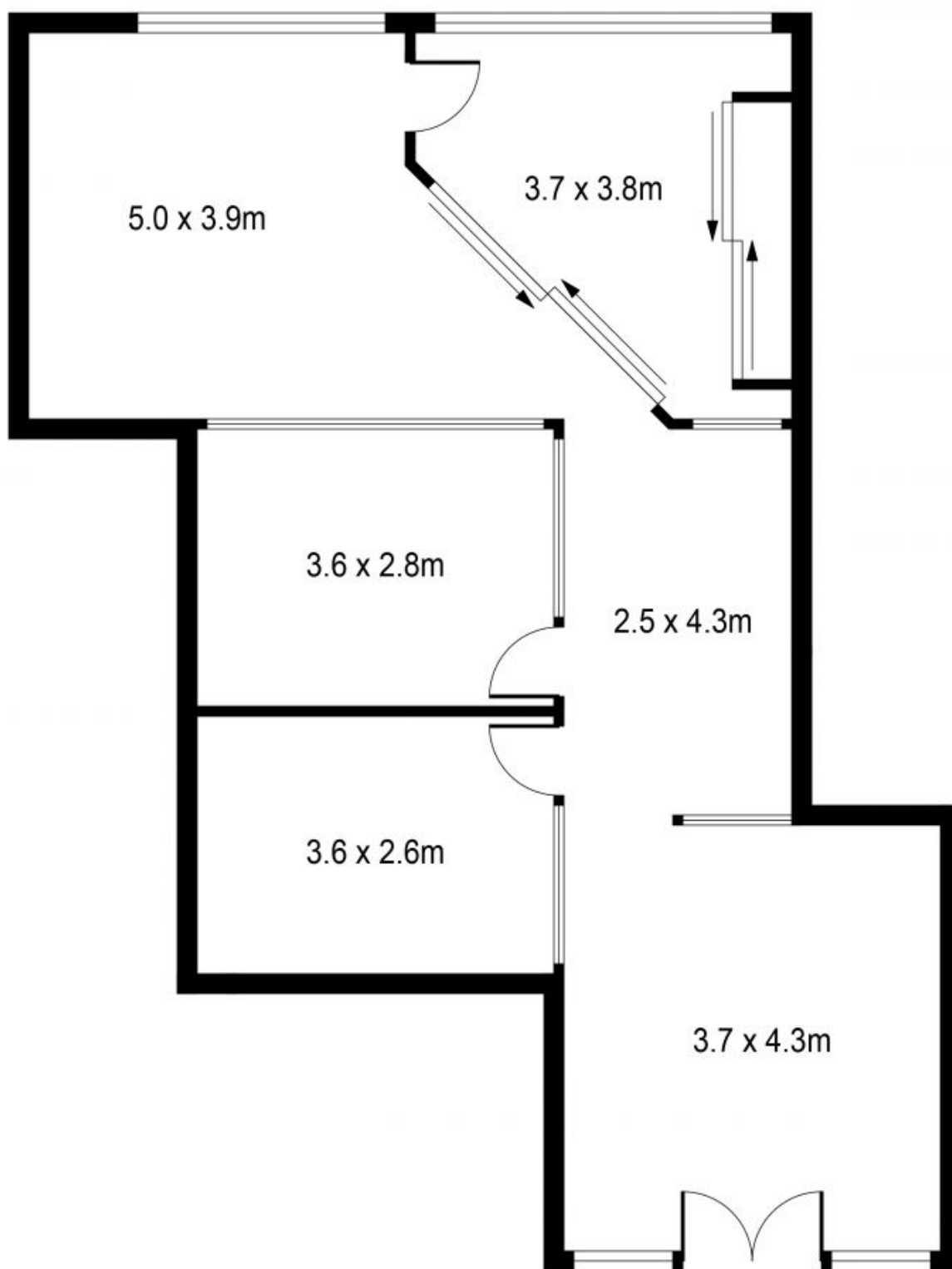
Outgoings (Appx. Per annum)
 Strata Levies: \$ 6,993
 Council Rates: \$ 1,639.88
 Water Rates: \$ 721.50

Council Rates: \$0.00/year (approx)
Water Rates: \$0.00/year (approx)
Strata Rates: \$0.00/year (approx)



Mary Wang

0416236446



PLANS SHOWN ONLY INDICATIVE OF LAYOUT. DIMENSIONS ARE APPROXIMATE.



92/420 Pitt Street

92/420 Pitt Street SYDNEY

SYDNEY, NSW



RAY 永誠地產
REALTORS

誠地產
ORS