

**445/311 Castlereagh Street HAYMARKET, NSW**

## Centrally Located Fitted Office with parking in Sydney CBD

This is an excellent opportunity to occupy a modern commercial suite in the heart of City. Located between Castlereagh Street and Campbell Street and is handy to Central Station, Town Hall Station, short walk to world square and China Town. This well-kept spacious 102 sqm office is ideal for working professionals. The fit-out consists of reception area, two rooms and open plan work area.

### Features:

- Appx. 85sqm plus 17sqm LUG
- Reception and waiting area
- Internal kitchenette
- Secure lock up garage
- Access to facilities including swimming pool, gym, spa, table tennis and rooftop BBQ

For more information or inspection times, please call

**Council Rates:** \$0.00/year (approx)

**Water Rates:** \$0.00/year (approx)

**Strata Rates:** \$0.00/year (approx)



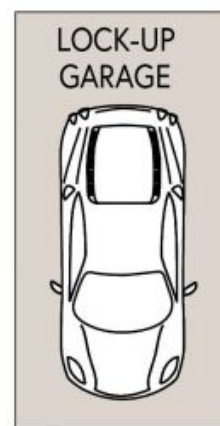
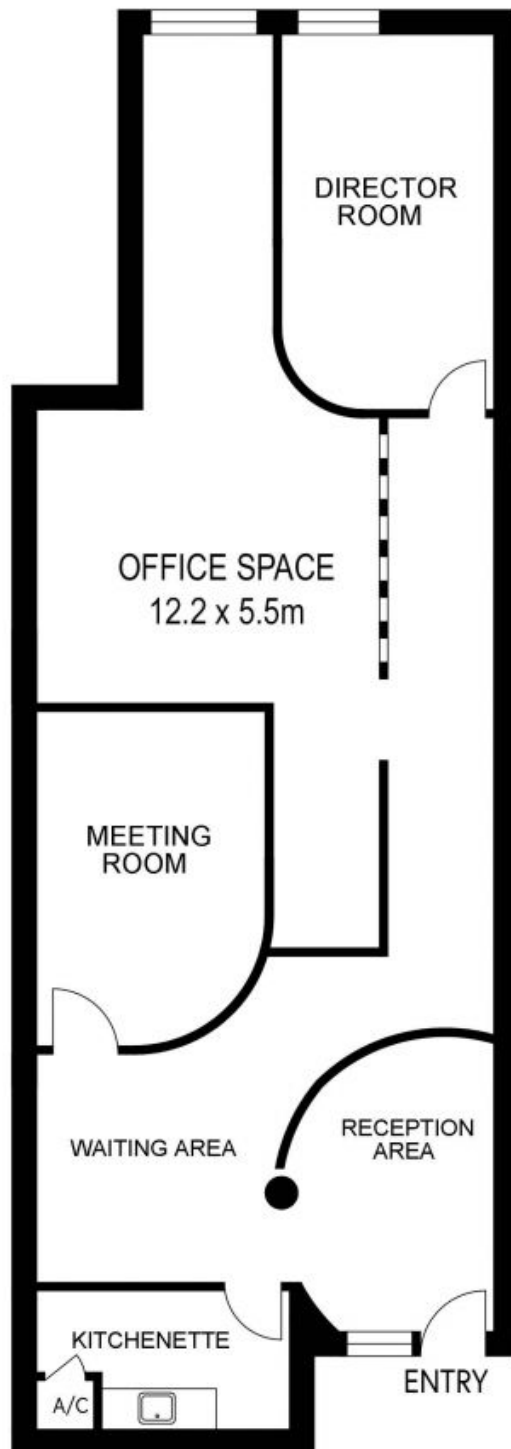
**Mary Wang**

0416236446



**Stephen Liu**

0416098883



TOTAL AREA :102 sqm  
85 sqm OFFICE  
17 sqm LUG

PLANS SHOWN ONLY INDICATIVE OF LAYOUT. DIMENSIONS ARE APPROXIMATE.



445/311 Castlereagh Street SYDNEY  
HAYMARKET, NSW



RAY 永誠地產  
REALTORS

誠地產  
ORS